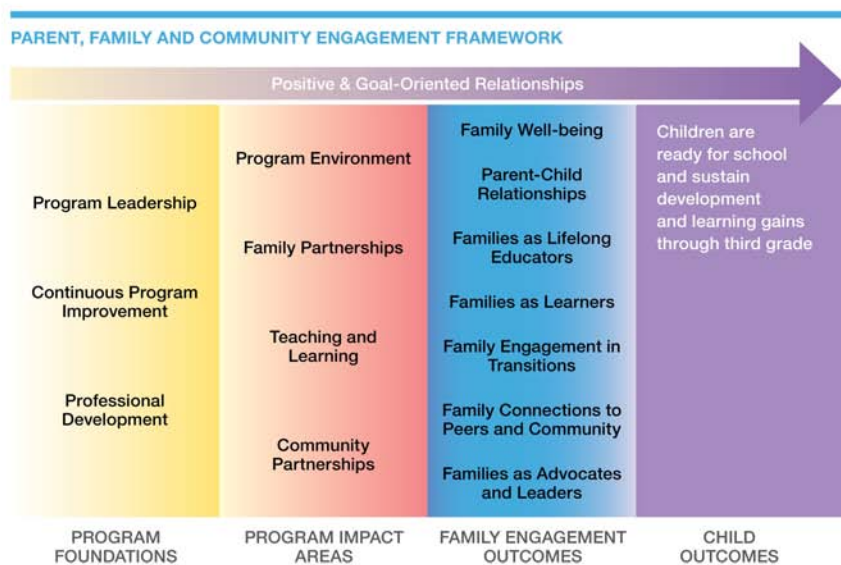




## Best Practices in Family and Community Engagement Video Series Engaging Fathers Facilitator’s Guide

### Video Series Overview

The Best Practices in Family and Community Engagement Video Series is designed to support each program’s efforts toward systemic and integrated engagement. Rooted in the Office of Head Start (OHS) Parent, Family, and Community Engagement (PFCE) Framework, the videos highlight examples of innovative approaches to engagement that foster strong relationships with families and lead to positive outcomes for children and families.



The OHS PFCE Framework is a research-based approach to program change that shows how Head Start/Early Head Start (HS/EHS) programs can work together as a whole – across systems and service areas – to promote family engagement and children’s learning and development.

### Engaging Fathers Video Overview

This video highlights the strategies one HS/EHS program uses to engage fathers in their children’s learning and healthy development. Dedicated fathers learn from one another, make connections, and build a community that helps them fulfill their role as one of the most important people in their children’s lives.

### Facilitator Notes

Programs can use this video as a professional development tool for activities and planning related to father engagement. There are a number of opportunities for learning and discussion, with particular emphasis on a deeper understanding of the strategies and outcomes of the PFCE Framework.



## Setting up the Video

Provide the context and overview of the video explained above.

Reference the PFCE Framework and ask participants to watch for specific strategies that contribute to successful father engagement. Consider the suggested themes listed below.

## PFCE Framework Themes to Consider

### Program Foundations

- **Committed Program Leadership**  
This program's leadership demonstrates a clear and consistent commitment to father engagement. The leadership makes fathers a priority with a vision firmly grounded in research and program experience.

### Program Impact Areas

- **Supportive and Welcoming Program Environment**  
All program staff create a safe and welcoming environment for fathers and encourage meaningful participation in daily program routines as well as activities dedicated to fathers.
- **Creating and Sustaining Family Partnerships**  
Staff and fathers build ongoing, respectful, and goal-oriented relationships to promote progress on family and child development goals.

### Family Engagement Outcomes\*

- **Strong Positive Parent-child Relationships**  
Beginning with transitions to parenthood, parents and families develop warm relationships that nurture their child's learning and development.
- **Parent and Family Connections to Peers and Community**  
Parents and families form connections with peers and mentors in formal or informal social networks that are supportive and/or educational and that enhance social well-being and community life.

*\*An outcome is the final result achieved after you have implemented your goals.*

## For Follow-up Discussion

- What specific strategies did you see the program use to engage fathers? How do the strategies work together to create a father-friendly environment?
- What interested you most about this program's approach to engagement?
- Did you observe any missed opportunities for engagement? What might you do differently?
- What father engagement strategies do you already use in your program? Are there any new strategies your program might want to try?

