



April 20, 2023

Supporting Infant and Toddler Peer Relationships

Viewer's Guide

This viewer's guide helps you capture your ideas as you engage in the webinar content. During this webinar, we focus on supporting peer relationships with infants and toddlers. Have you ever thought about how early peer relationships begin to form? Do you ever wonder how children begin to understand themselves and others? How can we help children start building peer relationship skills from an early age? We'll answer these questions and more throughout the webinar. The resources, reflection questions, and activities help you think about ways to support peer relationships from birth to three. Helpful resources can be found in the Resources section at the end of this guide.

Video Reflection: Attachment and Sense of Self

How is the adult supporting baby Logan's developing sense of self?



National Center on
Early Childhood Development, Teaching, and Learning

This training was supported by the Administration for Children and Families (ACF) of the United States (U.S.) Department of Health and Human Services (HHS) as part of a financial assistance award totaling \$10,200,000 with 100% funded by ACF. The contents are those of the author(s) and do not necessarily represent the official views of, nor an endorsement, by ACF/HHS, or the U.S. Government. This resource may be duplicated for noncommercial uses without permission.

Video Reflection: Peers in a Learning Space

What did you notice about how the adult arranged the environment? How are the babies showing interest in each other? How does the adult support peer relationships?



Strategies for Supporting Infants' Interest in Other Infants

What strategies have you tried to support infants' early interest in one another? Which new ones do you plan to try?



Video Reflection: Imitation

How is the adult supporting imitation and shared understanding during these activities?



Video Reflection: Care for Others

How is the adult supporting the toddler as she works on her prosocial skills?



Video Reflection: Turn Taking



What differences do you notice in these two clips? Why might these differences exist?

Strategies to Support Turn Taking and Cooperation



What other materials do you use in your space to encourage cooperation and turn taking?

Video Reflection: Navigating Challenges



What are the two conflicts that occur between peers in the video? How does the adult respond to support healthy peer relationships?

Video Reflection: Inclusion



How does the therapist use both the social and physical environment to support peer relationships and build belonging?

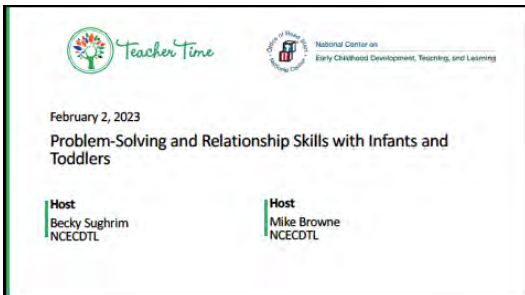
Resource Spotlight: Addressing Infant and Toddler Behaviors That Challenge Adults



All infant and toddler behaviors have meaning. Learn the developmental reasons why young children behave in ways that are challenging to adults. Discover key strategies for addressing behaviors adults find challenging and supporting infants and toddlers when they exhibit them.

<https://eclkc.ohs.acf.hhs.gov/video/addressing-infant-toddler-behaviors-challenge-adults>

Resource Spotlight: Problem-Solving and Relationship Skills with Infants and Toddlers



Children are born ready to solve problems! Infants and toddlers rely on supportive relationships to learn how to recognize a problem and find a solution. Problem-solving involves patience, persistence, and creativity from both the child and the adults in their lives. As infants and toddlers explore their world and engage in play with peers, challenges and conflicts provide opportunities to learn and grow. Discover practical strategies to foster problem-solving and relationship-building skills with infants and toddlers.

<https://eclkc.ohs.acf.hhs.gov/teaching-practices/teacher-time-series/infanttoddler-positive-behavior-support>

Resource Spotlight: Connection Modules Video 1.12: Routine in a Program – Rolling with Friends



Watch the full video of a physical therapist creating a physical and social environment that supports inclusive peer relationships.

<https://connectmodules.dec-sp.ed.org/connect-modules/resources/videos/video-1-12/>

Helpful Resources (*resources available in Spanish)

Online Resources

Head Start Early Learning Outcomes Framework*

<https://eclkc.ohs.acf.hhs.gov/school-readiness/article/head-start-early-learning-outcomes-framework>

Effective Practice Guides: Social and Emotional Development*

<https://eclkc.ohs.acf.hhs.gov/school-readiness/effective-practice-guides/social-emotional-development>

Environments That Support High-Quality Inclusion

<https://eclkc.ohs.acf.hhs.gov/video/environments-support-high-quality-inclusion>

Infants and Toddlers with Disabilities*

<https://eclkc.ohs.acf.hhs.gov/children-disabilities/article/infants-toddlers-disabilities>

Building Belonging iPD Course

<https://eclkc.ohs.acf.hhs.gov/professional-development/individualized-professional-development-ipd-portfolio/individualized-professional-development-ipd-portfolio>

Multicultural Principles for Early Childhood Leaders*

<https://eclkc.ohs.acf.hhs.gov/culture-language/article/multicultural-principles-early-childhood-leaders>

Connecting Research to Practice Briefs

Infant and Toddler Behaviors That Can Challenge Adults*

<https://eclkc.ohs.acf.hhs.gov/publication/infant-toddler-behaviors-can-challenge-adults>

Learning to Get Along: Young Children's Social and Emotional Development*

<https://eclkc.ohs.acf.hhs.gov/publication/learning-get-along-young-childrens-social-emotional-development>

Supporting Children with Disabilities or Suspected Delays*

<https://eclkc.ohs.acf.hhs.gov/publication/supporting-children-disabilities-or-suspected-delays>

Talking to Children About Differences and Similarities*

<https://eclkc.ohs.acf.hhs.gov/publication/talking-children-about-differences-similarities>

You're the Best Teacher! Responsive Interactions with Young Children*

<https://eclkc.ohs.acf.hhs.gov/publication/youre-best-teacher-responsive-interactions-young-children>

Webinars

The Science Behind Social and Emotional Development

<https://eclkc.ohs.acf.hhs.gov/video/science-behind-social-emotional-development>

Supporting Infants and Toddlers with Disabilities or Suspected Delays

<https://eclkc.ohs.acf.hhs.gov/video/supporting-infants-toddlers-disabilities-or-suspected-delays>

Can We Be Friends? Peer Interactions and Your Curriculum (Infant/Toddler)

<https://eclkc.ohs.acf.hhs.gov/video/infanttoddler-teacher-time-episode-4>

The Importance of Peer Interactions and Social Pretend Play

<https://eclkc.ohs.acf.hhs.gov/video/importance-peer-interaction-social-pretend-play>