 **Teacher Time** Welcome!


While you are waiting for Teacher Time to begin, please **introduce yourself in the chat box**.

Let us know:

1. Your name
2. Where you are from
3. Your position/title

4. And, answer the following question:

**How do you communicate with families about transitions?**




---

---

---

---

---

---

---

---



**TEACHER TIME:**  
Supporting Infants, Toddlers, and their Families Through Transitions

February 15 2019

**Hosts:** Judi Stevenson-Garcia & Treshawn Anderson

**Guest Host:** Gail Joseph

**Chat Room Facilitator:** Jan Greenberg



**ECDTL**

---

---

---


---

---


---

---

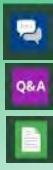
---

 **ON24 Features**

Chat Room Facilitator:  
Jan Greenberg



- Customizable widgets at the bottom of the screen
- Chat Room for group interaction
- Q & A box for questions during the webside
- Resource widget
- Download supporting documents
- Use a wired connection and close all windows for best results
- Complete evaluation



**ECDTL**

---

---

---

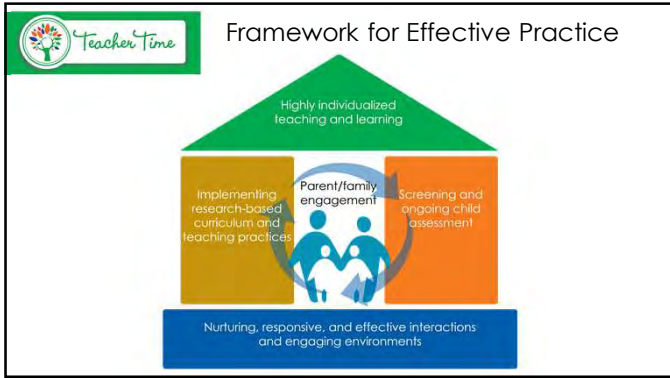
---

---

---

---

---




---

---

---

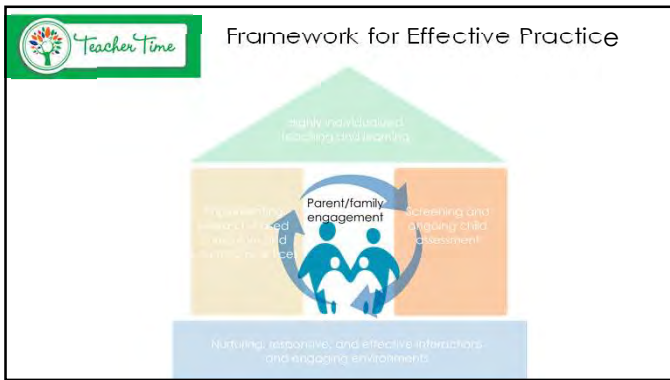
---

---

---

---

---




---

---

---

---

---


---

---

---

**Teacher Time**

Guest Host



**Gail Joseph**  
University of Washington

---

---

---

---

---

---

---

---



### Types of Transitions

1. Program to program
2. Classroom to classroom
3. From home or home-based to a child care setting
4. Between everyday routines and activities

---

---

---

---

---

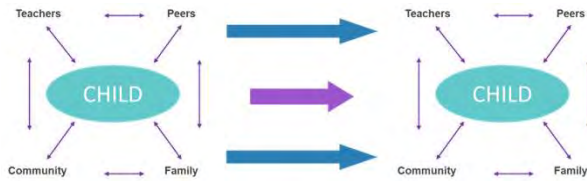
---

---

---



### "Interactive Web" View



---

---

---

---

---

---

---

---



**Stability** and **Consistency** between settings is crucial to children's school readiness.

---

---

---

---

---

---

---

---



### Supporting children and families through transitions

To make transitions successful, we need:

- 1. Information
- 2. Supportive relationships
- 3. Alignment



---

---

---

---

---

---

---

---



### Research tells us:

- More transition practices= better adjustment
- Better adjustment and more positive relationships with teachers = improved social emotional and cognitive skills

---

---

---

---

---

---

---

---



### Information

What information is important for parents to have when they're going through big transitions with their children?

---

---

---

---

---

---

---

---



### Supporting children and families through transitions

To make transitions successful, we need:

- 1. Information
- 2. Supportive relationships
- 3. Alignment



---

---

---

---

---

---

---

---



Home visits



Tours of the learning environment



FAQs



Data shared with new teachers



---

---

---

---

---

---

---

---



---

---

---

---

---

---

---

---



### Supporting children and families through transitions

To make transitions successful, we need:

- 1. Information
- 2. Supportive relationships
- 3. Alignment



---

---

---

---

---

---

---

---



### Relationships

How do you use your relationships with children and families to help them through transitions?

---

---

---

---

---

---

---

---



---

---

---

---

---

---

---

---



### Supporting children and families through transitions

To make transitions successful, we need:

- 1. Information
- 2. Supportive relationships
- 3. Alignment



---

---

---

---

---

---

---

---



---

---

---

---

---

---

---

---



### Supporting children and families through transitions

To make transitions successful, we need:

- 1. Information
- 2. Supportive relationships
- 3. Alignment



---

---

---

---

---

---

---

---




Safe Foundations, Healthy Futures

---

---

---

---

---

---

---

---



## DUAL LANGUAGE LEARNER CELEBRATION WEEK

Help us celebrate Dual Language Learner Celebration Week, February 19-22, by:

- Joining us daily at 1PM ET for chats in the Culturally and Linguistically Responsive Practices (CLRPP) MyPeers Community
- Attending two webinars
  - DLLPA Education and Child Development Services for DLLs from 2:00-3:30 PM ET on Tuesday 2-19-19
  - Planned Language Approach – Background Knowledge from 3:00 – 4:00 PM ET on Thursday 2-21-19

Create and post via social media using the hashtag #BrilliantDualLanguageLearners, daily topics:

- Tuesday, February 19<sup>th</sup>**  
Spotlight Best Practices and Resources from the Field
- Wednesday, February 20<sup>th</sup>**  
Illuminate Systems and Services for Coordinated Approaches for DLLs
- Thursday, February 21<sup>st</sup>**  
Build Bright Transitions for Children who are DLLs
- Friday, February 22<sup>nd</sup>**  
Focus on Research that Powers Our Work with DLLs



#BrilliantDualLanguageLearners

ECDTL

---

---

---

---

---

---

---

---







**Resources:**

- MyPeers
- T4T
- ELOF2GO
- Safe Foundations, Healthy Futures

**Upcoming Teacher Time Episodes:**

**March 15** – Supporting Families Through Transitions – Preschoolers

**April 19** – Using Ongoing Assessment to Support Effective Infant and Toddler Teaching Practices

---

---

---

---

---

---

---

---